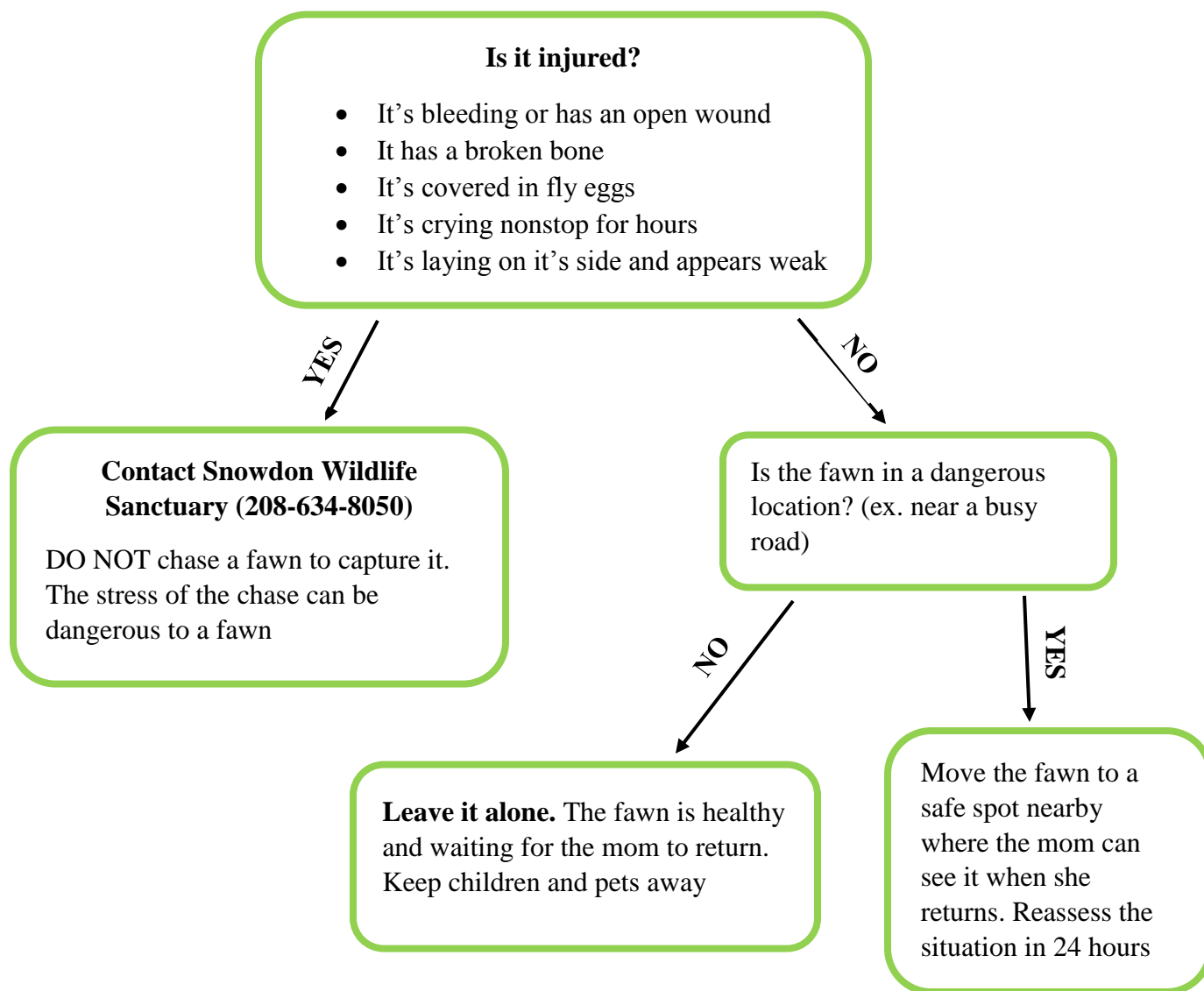


# What to do if you find a fawn

Each year Snowdon gets many calls about fawns. Often, an individual finds a fawn and thinks it needs to be rescued. In most cases the fawn does not need help.

A doe will go off and forage and leave her fawn(s) alone all day and come back to feed them at dawn and dusk. Well-meaning humans often believe since the fawn is alone it's orphaned, leading to many fawn "kidnappings" each year. **A fawn has the BEST chance of survival when it's cared for by it's mother.**

If you find a fawn alone and think it needs help here is a flow chart to determine the best course of action:



**If you are unsure about whether or not it's orphaned leave it where it is and contact Snowdon Wildlife Sanctuary (208-634-8050)**